

Shellfish Harvesting Area Classification Program

Jill Fleiger
Environmental Administrator
Division of Aquaculture



0 50 100 200 Miles



National Shellfish Sanitation Program

- Establish minimum requirements to regulate interstate commerce of shellfish – NSSP Model Ordinance.
- Protects public health by ensuring the harvest of shellfish are from properly classified waters and ensuring shellfish are handled properly at all levels from harvest to final sale to the consumer.
- US Food and Drug Administration oversees and ensures compliance of the NSSP by all member states through annual audits.



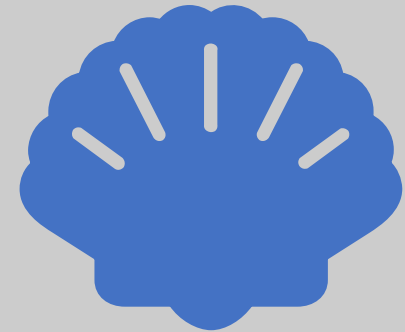
National Shellfish Sanitation Program

- Required to resurvey every 12 years at a minimum.
- Pensacola SHA current survey was performed in 2016.
- Last summer industry requested we re-analyze the current classifications. We re-analyzed using data from 2016 – 2021.



Fecal Coliform Bacteria: Indicator Species

- Fecal coliform bacteria are a group of bacteria excreted in feces by warm blooded animals, including humans, domestic animal and wildlife.
- When fecal coliform bacteria are present, human pathogens may also be present.
- The standard for conditionally approved classification is 14/31.



Shellfish Harvesting Area Classifications



- Conditionally Approved (Green)
 - Meet NSSP water quality standards for fecal coliforms bacteria and are safe for harvest when the area is open
 - Predicatively closed when an environmental variable (i.e.. Rainfall or River) increases fecal coliform in the water

- Prohibited (Red)
 - Are closed to the harvest of shellfish at all times
 - These areas are either too close to pollution sources or water quality indicates they do not meet approval or conditionally approved classification.

SHELLFISH HARVESTING AREA FC STATIONS Pensacola (#02) Shellfish Harvesting Area in Escambia and Santa Rosa Counties

FC

- Low
- Moderate
- Moderate High
- High

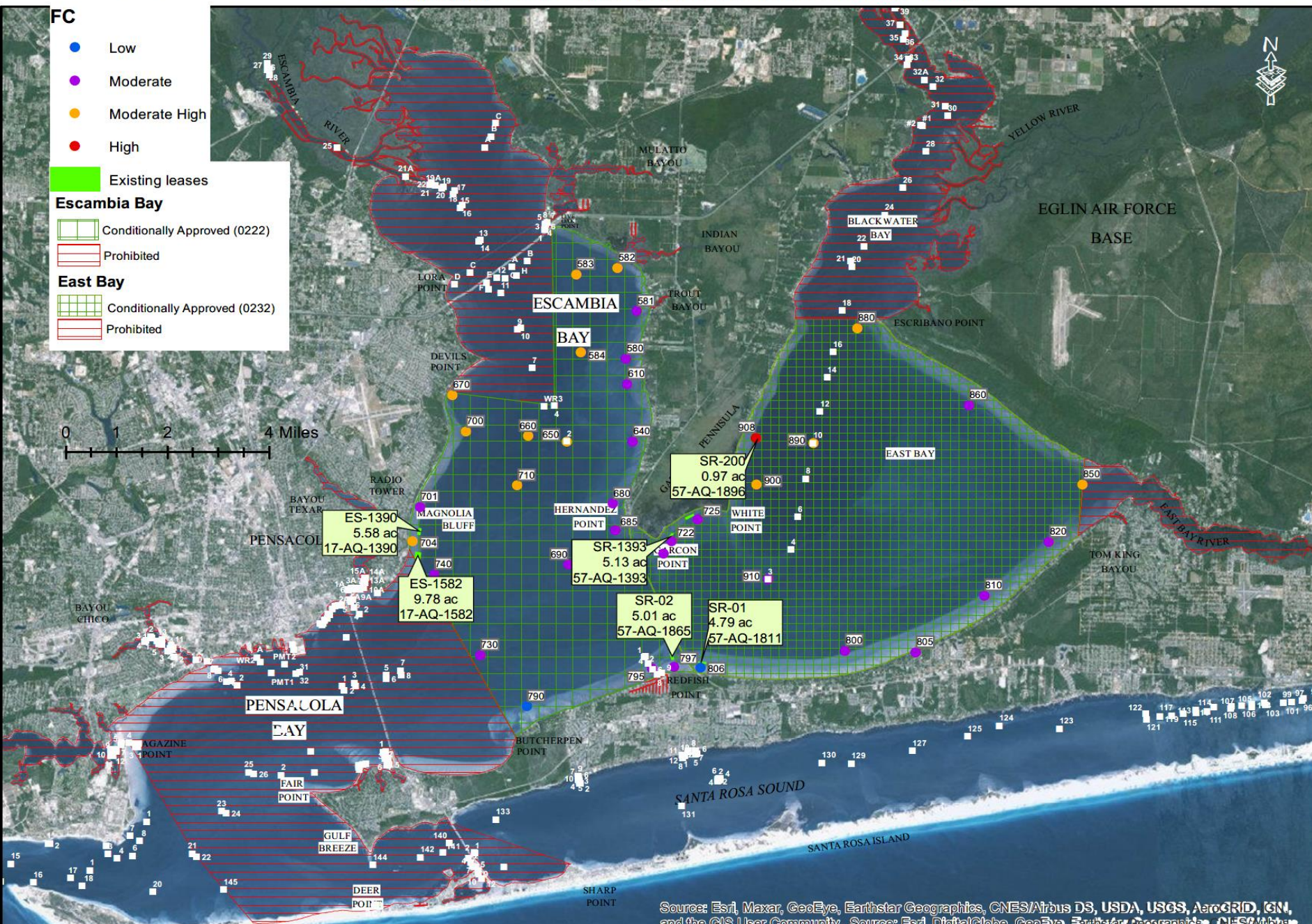
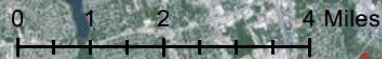
Existing leases

Escambia Bay

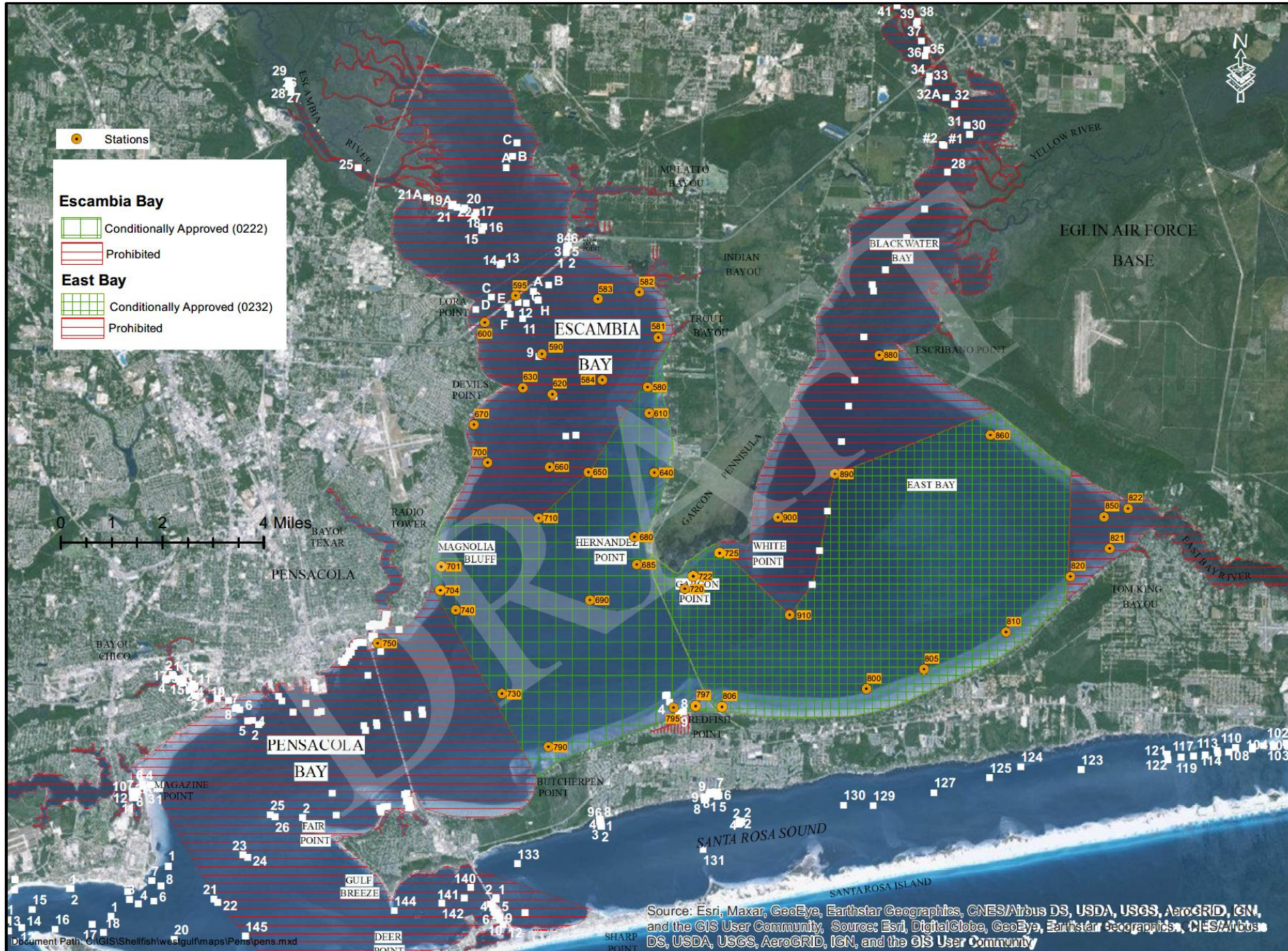
- Conditionally Approved (0222)
- Prohibited

East Bay

- Conditionally Approved (0232)
- Prohibited



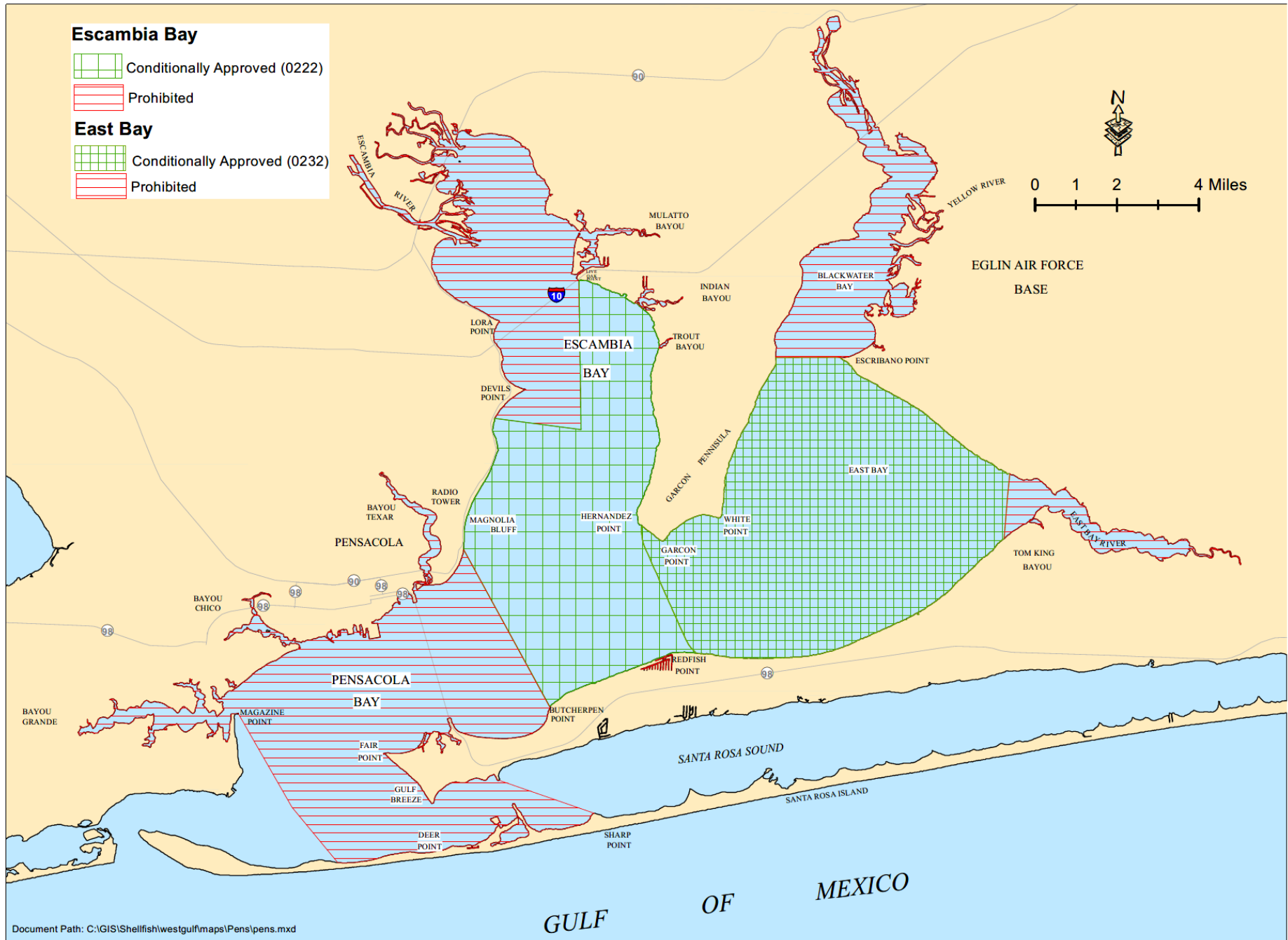
PROPOSED SHELLFISH HARVESTING AREA CLASSIFICATION MAP
 Pensacola (#02) Shellfish Harvesting Area in Escambia and Santa Rosa Counties



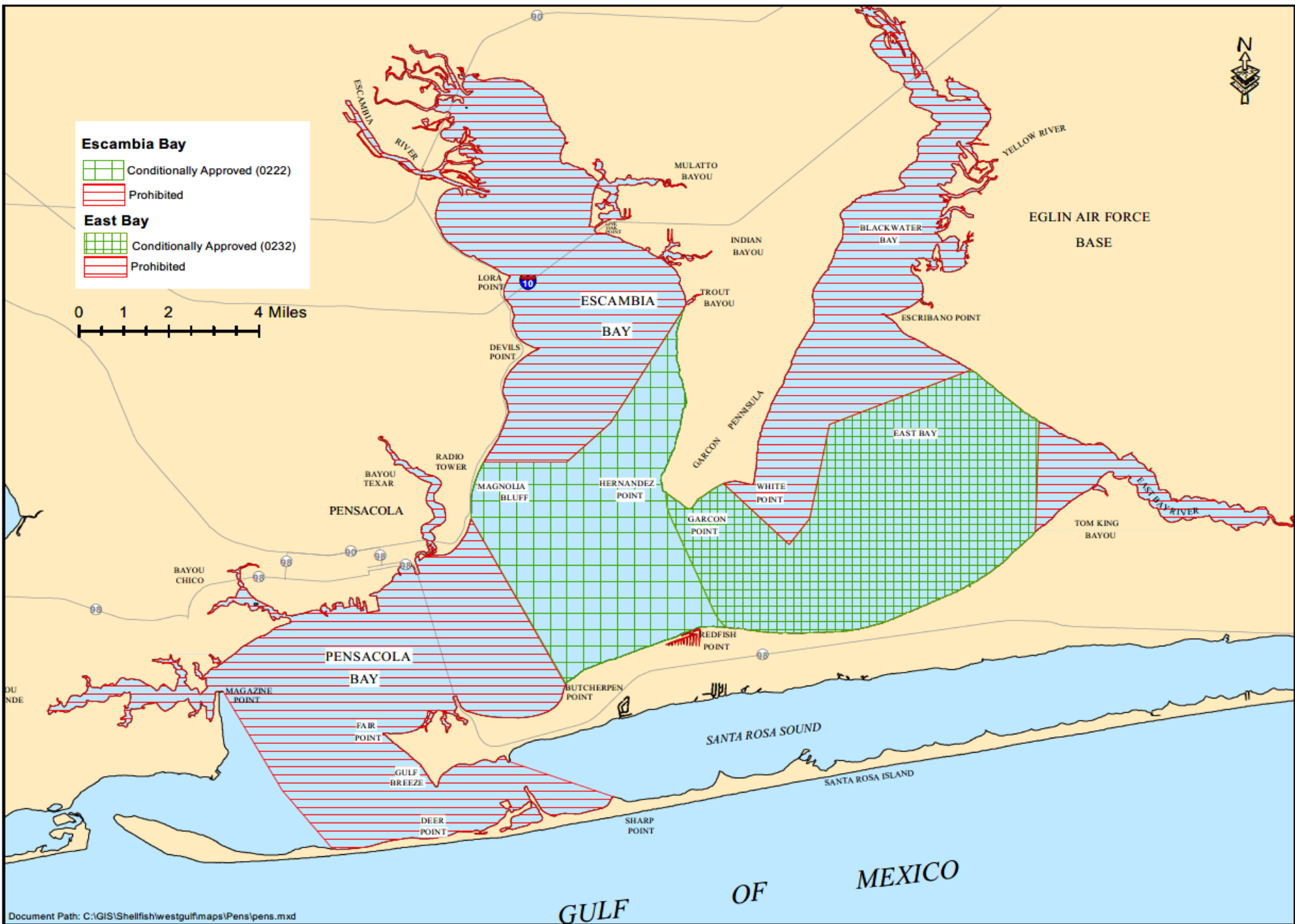
Source: Esri, Maxar, GeoEye, Earthstar Geographics, CNES/Airbus DS, USDA, USGS, AeroGRID, IGN, and the GIS User Community; Source: Esri, DigitalGlobe, GeoEye, Earthstar Geographics, CNES/Airbus DS, USDA, USGS, AeroGRID, IGN, and the GIS User Community

SHELLFISH HARVESTING AREA CLASSIFICATION MAP #02 (Survey: July 22, 2016)



Pensacola (#02) Shellfish Harvesting Area in Escambia and Santa Rosa Counties





PROPOSED SHELLFISH HARVESTING AREA CLASSIFICATION MAP
 Pensacola (#02) Shellfish Harvesting Area in Escambia and Santa Rosa Counties



Escambia Bay

-  Conditionally Approved (0222)
-  Prohibited

East Bay

-  Conditionally Approved (0232)
-  Prohibited

0 1 2 4 Miles

Questions?

- Jillian.Fleiger@fdacs.gov

